



Credit photo: Olivier Duval



Credit photo: Nicolas Boffin - Aube

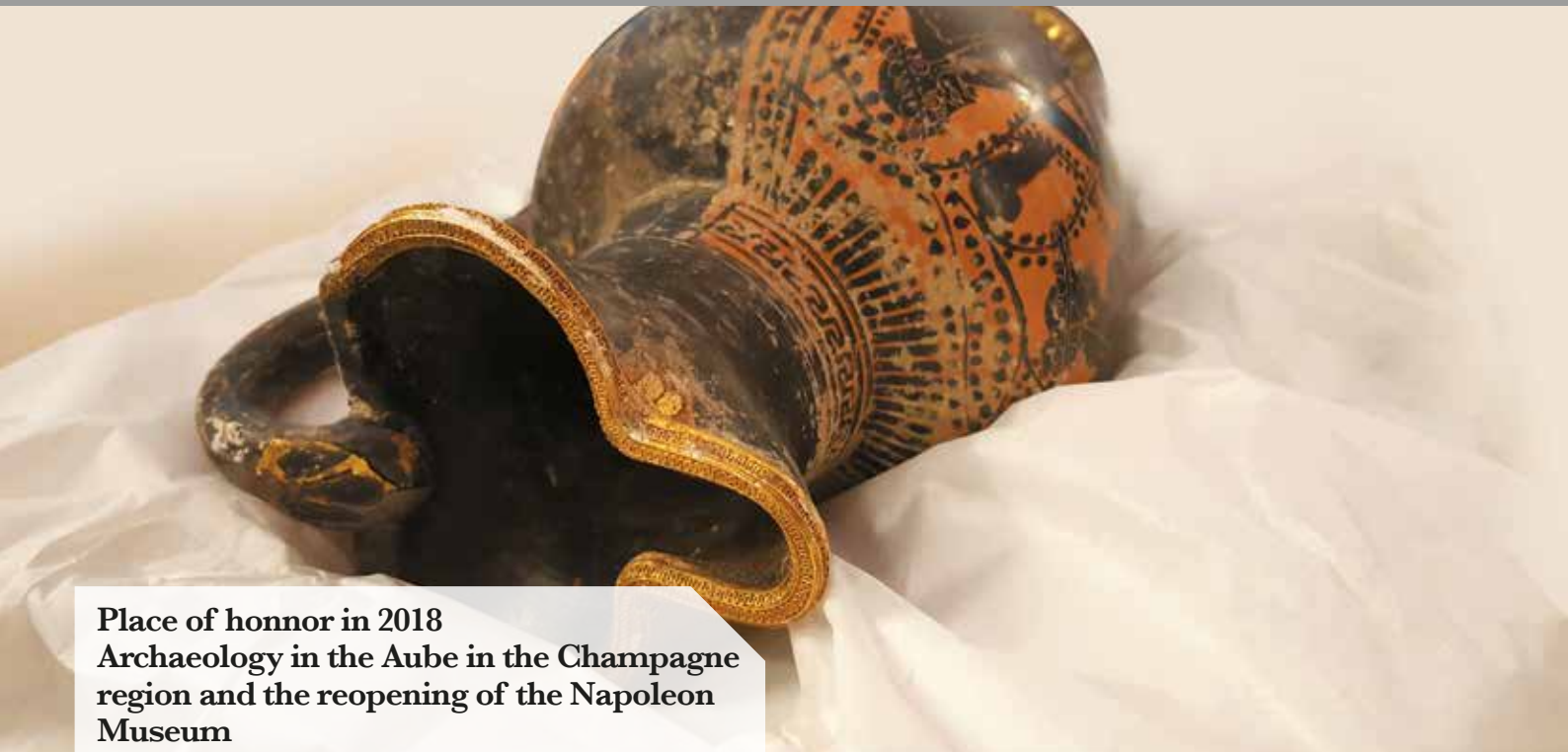


Credit photo: Aube en Champagne Tourisme

Excursions and group holidays

Credit photo: J. Buisser - 2016

Credit photo: Aube en Champagne Tourisme



**Place of honor in 2018
Archaeology in the Aube in the Champagne
region and the reopening of the Napoleon
Museum**

Welcome to Aube en Chamapagne p 3

Gastronomy and Champagne

The prestige of Champagne and of crystal p 4
About the Cistercian origins of the Champagne grape **NEW TOUR** p 5
Aube gastronomy p 6

Culture and Heritage

Troyes in Champagne from the XII to XIX centuries **NEW TOUR** p 7
Castle and Claudel Museum just outside Paris p 8
Beginnings of the Templars p 9

Nature

Pleasure of the senses **NEW TOUR** p 10
From half-timbered houses to the windmill p 11

Great men of Champagne

In the company of Pierre-Auguste Renoir p 12
In the footsteps of Napoleon **NEW TOUR** p 13
Troyes, the city of Rashi **NEW TOUR** p 14

Unusual Escapade

The magic of Nigloland p 15
Craft and tradition **NEW TOUR** p 16

Who are we ? p 17
General conditions of sale p 18
The national network of departemental destination p 19

Welcome to Aube en Champagne only one hour and a half from Paris



Easy access:

Motorways:

A5 (Paris – Dijon)
et A26 (Calais-Reims)

Distances :

Paris-Troyes : 150 km
Bruxelles-Troyes : 350 km

Stations:

Troyes, Romilly-sur-Seine,
Nogent-sur-Seine, Bar-sur-Aube and
Vendevre-Sur-Barse



Innovative Slow Tourism destination

Selective, quality, authentic tourism: meetings with the producers, discovery of their secrets, development of gastronomical heritage, of craftsmanship... Certified ISO 20121, Aube en Champagne Tourism is highly invested in the management of sustainable events and hosts the Slow Tourism Lab (member of the France Tourism Lab) to innovate in the field of responsible tourism.



2018 events calendar on our website :

www.aube-champagne.co.uk - your diary

Take a break in Champagne !



<http://groupes.champagne-breaks.com/en>

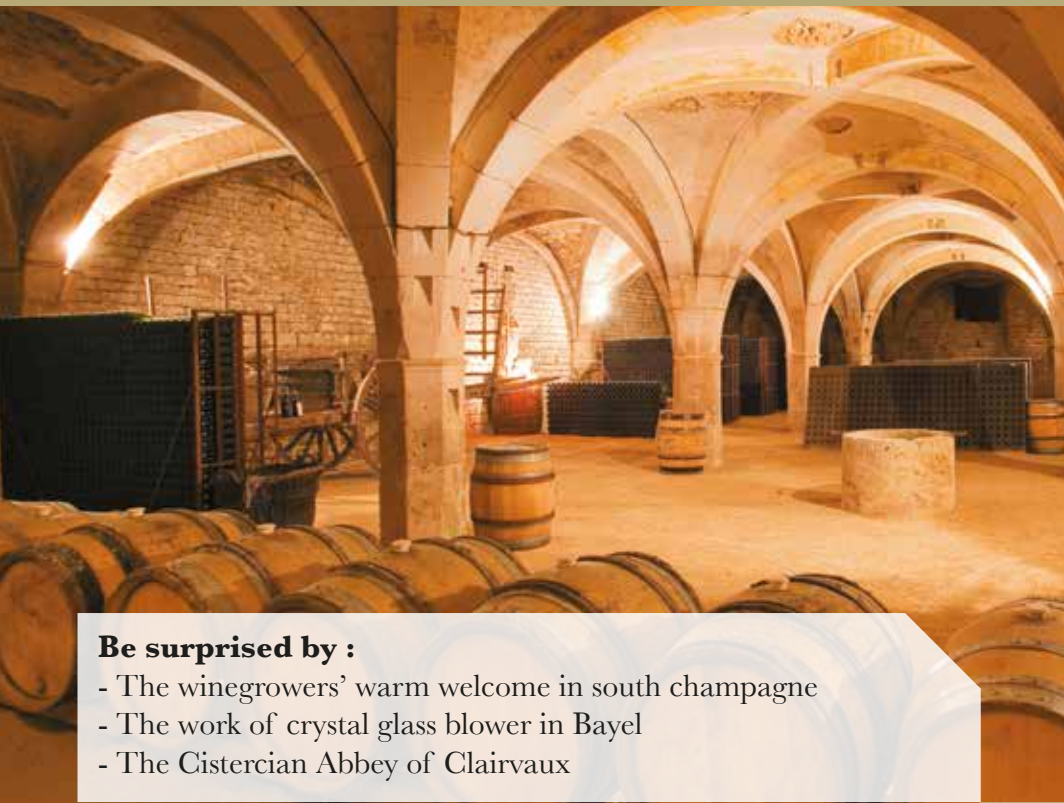


Depending **on your needs, your interests or you wishes**, contact

Estelle: +33 (0)3 25 42 50 83

For « custom holidays »

The Prestige of Champagne and of Crystal



CHAMPAGNE

In Aube, the Champagne Route runs from Villenauxe la Grande to Côte des Bar via Montgueux. Chardonnay is found in the west, while in the east, Pinot Noir reigns in Côte des Bar. Aube en Champagne represents almost a quarter of the Champagne vineyard and bottles sold throughout the world each year.

Be surprised by :

- The winegrowers' warm welcome in south champagne
- The work of crystal glass blower in Bayel
- The Cistercian Abbey of Clairvaux

Credit photo : © Didier-Guy

MORNING

Guided tour of the Crystal Museum followed by a **demonstration of glass blowing**, a visit to the museum boutique and a tasting of champagne in 2 different Bayel crystal flutes. Lunch in the heart of Clairvaux Abbey.

AFTERNOON

Immersion into the ecclesiastical world of **Clairvaux Abbey** founded in the XII century by Saint Bernard, a French masterpiece of monastic architecture transformed into a prison by Napoleon. Discovery of various buildings retracing the site's history: the splendid building of the converts with its cellar and dormitory (XII century), the Barn from the XVI century, the hostelry of the Ladies and the classic Grand Convent from the XVIII century. You will finish with a visit to a Cistercian Champagne cellar, a former annexe of the abbey followed by a champagne tasting.



Credit photo : Pascal STRITT



« An extremely good day exploring Bayel crystal and Aube Champagne »

EXCURSION

1 day

From € 53*

Per person – transport not included

Distance : 31 km

*price based on a group of 30 people

Option to extend for a stay

2 days

From € 204* per person

Distance : 124 km

*price based on a group of 30 people

Finish your day with a fabulous dinner of food/champagne combinations in a Côte des Bar cellar before spending the night in a 3* hotel. The next day, discovery by bus of the **champagne vineyard**, the «cadoles» (dry stone vine workers shelters) and a visit to a **champagne cellar** in search of Louis XIV's favorite wine, **Les Riceys rosé**. Lunch of a local produce.



About the Cistercian origins of the Champagne grape

NEW

CHAMPAGNE

It is thanks to Bernard de Clairvaux, founder of the great line of Cistercian abbeys, that the Pinot Noir was planted in the Aube.

Be surprised by :

- The pastoral atmosphere of a picnic in the vineyards
- The flavors of champagne from Côte des Bar (south champagne)
- The Cistercian Abbey of Clairvaux

MORNING

Rendez-vous at the Champagne cooperative in Baroville. **Guided visit of the cellar.** Discover the unique qualities of our champagnes during a guided visit of the presses, fermentation rooms, cellars... and learn about the intricate processes involved in the traditional way of making Champagne. This visit will be followed by a **tasting of 3 champagnes.** Your **picnic** basket contains a cold meal comprised of delicious regional products complemented by two flutes of champagne.

AFTERNOON

Guided visit of the Clairvaux Abbey. Founded by Bernard de Clairvaux in 1115, Clairvaux soon became the head of 339 daughter houses throughout Europe. Touched by the 100 Years War, the abbey was rebuilt predominately in the XVIII century and transformed into a veritable monastic palace. Sold as a national asset during the Revolution, it was repurchased by Napoleon in 1808 and became the largest prison in France. Today, Clairvaux retains the dual identity of Abbey-prison.



« An enjoyable picnic and beautiful surroundings »

YOUR DIRECT CONTACT :
TOURISME ET LOISIRS CHAMPAGNE
18 PLACE SAINT NIZIER - 10000 TROYES
TÉL. : 03 25 49 91 50
t10.voyagesgroupes@orange.fr
www.tourismeloisirschampagne

EXCURSION

1 day

Valid from april to october

From € 49*

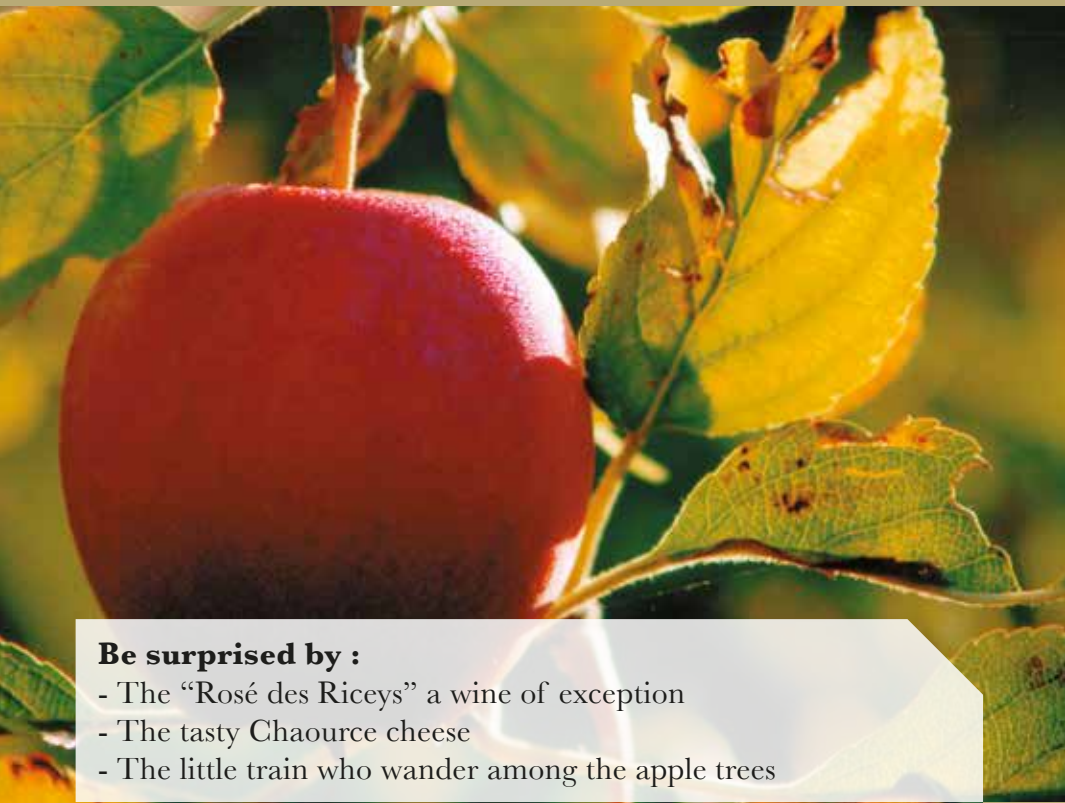
per person – transport not included

Distance : 11 km

*price based on a group of 30 people



Aube gastronomy



GASTRONOMY

From the fine food point of view, Aube has everything needed to bring joy to the hearts of Gourmets and food enthusiasts: the famous Brienne le Château sauerkraut, the celebrated Troyes «andouillette» chitterling sausages and the tasty Chaource cheese. Champagne complements Aube's cuisine wonderfully well. To champagne, add the delicate Les Riceys' rosé, Louis XIV's favorite rosé, or the Othe region's sparkling bottled cider. And to finish, champagne marc or sloe gin liqueur...

Be surprised by :

- The "Rosé des Riceys" a wine of exception
- The tasty Chaource cheese
- The little train who wander among the apple trees

MORNING

In the heart of **Pays d'Othe**, find out everything there is to know about **apples** from an educational point of view via film, an exhibition, a trip in a little train and a visit to the shop. Apple juice for the children, **Cider** for the adults.

You will then discover a **mushrooms farm**, its production and the cooked mushroom products like mushroom fondue with Chaource cheese. **Product tasting**. Lunch of a local product.

AFTERNOON

Visit a **cheese dairy** and discover traditionally made (hand-ladled) Chaource cheese and other specialities : Délice de Mussy, Lys de Champagne Ardenne... and then on to a champagne cellar in Les Riceys to discover the preferred wine of Louis 14th, **Rosé des Riceys**.



« Pays d'Othe is a wonderful discovery in Champagne. Exploring how cider is made in a little train, an excellent initiative. »

EXCURSION

1 day

From € 52*

Per person – transport not included

Distance : 55 km

*price based on a group of 30 people



Credit photo : Olivier Douard

Credit photo : Aurelien Ibanez

Troyes in Champagne from the XII to XIX centuries

NEW

TROYES IN CHAMPAGNE

Champagne's historic capital, Troyes invites visitors to lose themselves in its maze of little cobbled streets bordered by richly coloured, timber-frame houses. Street by street, Troyes' fabulous history is revealed, that of the 16th century, the golden age of artistic creation.

Be surprised by :

- The history of the city
- The Cellier St Pierre distillery
- The colourful half-timbered houses of the city of Troyes

MORNING

Guided visit of the **St-Loup Museum**, a museum of fine arts and archaeology situated in the Saint-Loup abbey, built in the XVII century. **The fine arts museum** offers visitors a coherent collection of French paintings from the XIV to XIX centuries. **The Archaeology Museum** owes its existence to confiscations from the French Revolution. Throughout the years, major city and regional improvement projects have revealed numerous archaeological remains which have added to the initial collection. You continue with a visit to the **St-Pierre Cellar** and its distillery nestled at the foot of the cathedral followed by a tasting of the **Prunelle de Troyes** (the Pearl, Jewel of Troye) in the newly restored barn from the XIII century.

Lunch of a local produce

AFTERNOON

You will then set off to the grounds of the Hôtel-Dieu-le-Comte to explore **the city of stained glass**, a remarkable XVIII century collection covering 10 centuries of stained glass making, ranging from small civilian windows to monumental works, with a focus on the wealth of the 200 Aube churches, all displayed at eye level. Next you will visit the **magnificent Troyes**: the historic Saint-Jean-au-Marché (Saint Jean in the Marketplace) quarter with its typical "cat alley", the Mortier d'Or (Golden Mortar) courtyard, and the Saint Madeleine church (XII century)...



«We had no idea how exotic the city is. We took a step back in time to the period of the champagne fairs!»

EXCURSION

1 day

From € 45*

Per person – transport not included

Distance : Whole program is based in Troyes

*price based on a group of 30 people

Option to extend for a stay

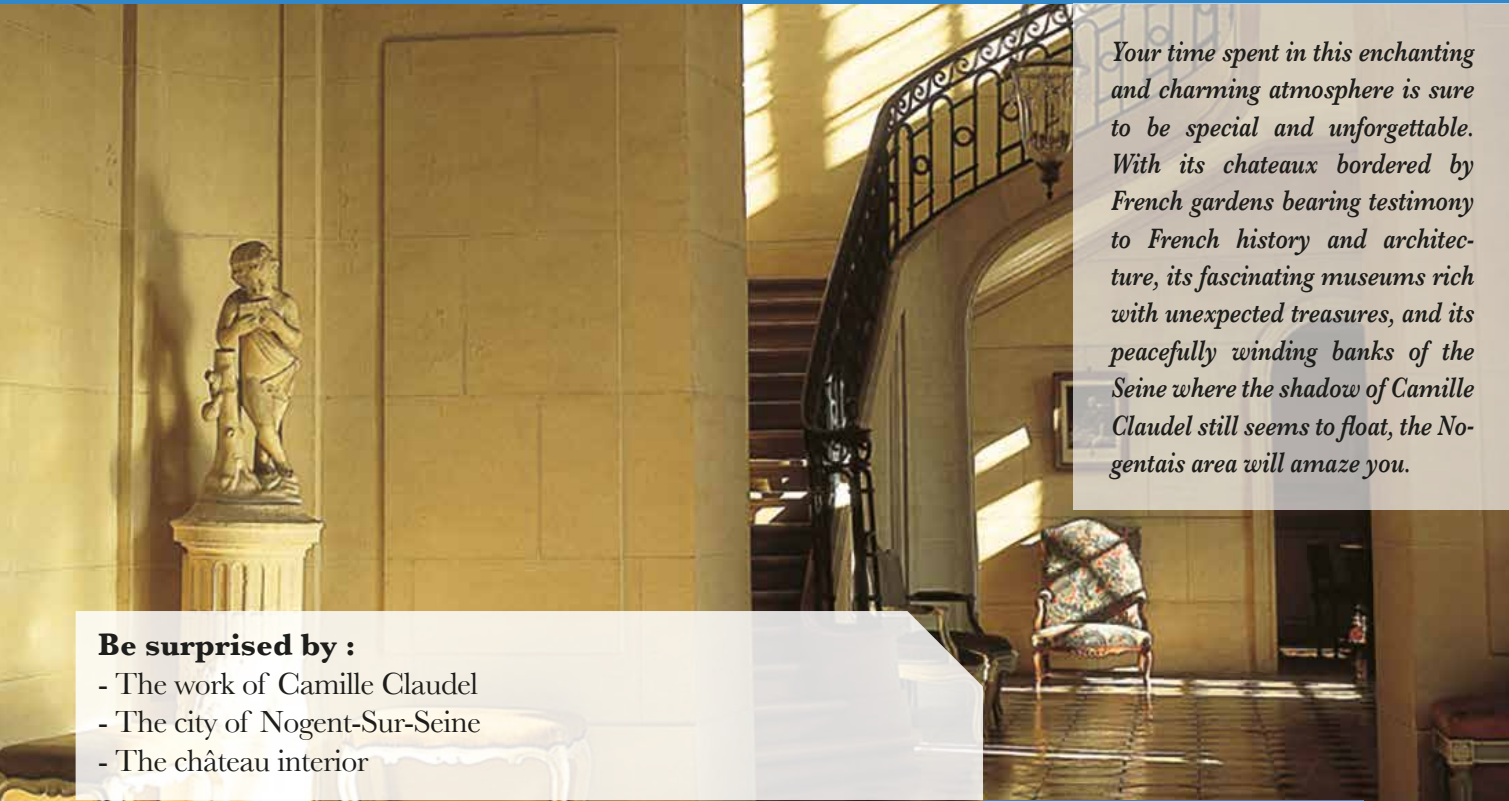
Exhibit dedicated to archaeology, 30 years of archaeological discoveries in the Aube territory, a crossroad of civilizations and trade dating from the Neolithic period to the Iron Age.



Credit photo : Département Aube

Credit photo : Nicolas Doherty Aube

Castle and Claudel Museum just outside Paris



Your time spent in this enchanting and charming atmosphere is sure to be special and unforgettable. With its chateaux bordered by French gardens bearing testimony to French history and architecture, its fascinating museums rich with unexpected treasures, and its peacefully winding banks of the Seine where the shadow of Camille Claudel still seems to float, the Nogentais area will amaze you.

Be surprised by :

- The work of Camille Claudel
- The city of Nogent-Sur-Seine
- The château interior

MORNING

Go back in time to the 18th century in the corridors of **Motte Tilly Château** and its French gardens (60 hectares). Lunch in the historic center of Nogent-Sur-Seine.

AFTERNOON

Understanding the context in which the artist **Camille Claudel** was formed, developed and had to make her mark, this is the challenge of this visit to the museum, in the town where as an adolescent, Camille Claudel met the sculptor Alfred Boucher in 1874.



« What a joy to discover the works of Claudel, a great artist! »



Credit photo : Marco Illuminati

EXCURSION

1 day

Validity: the museum will open in the spring of 2017

From € 43*

Per person – transport not included

Distance : 6 km

*price based on a group of 30 people

Option to extend for a stay

1 – Gourmet snack break (drink accompanied by “house” delicacies) and a stroll along the banks of the Seine

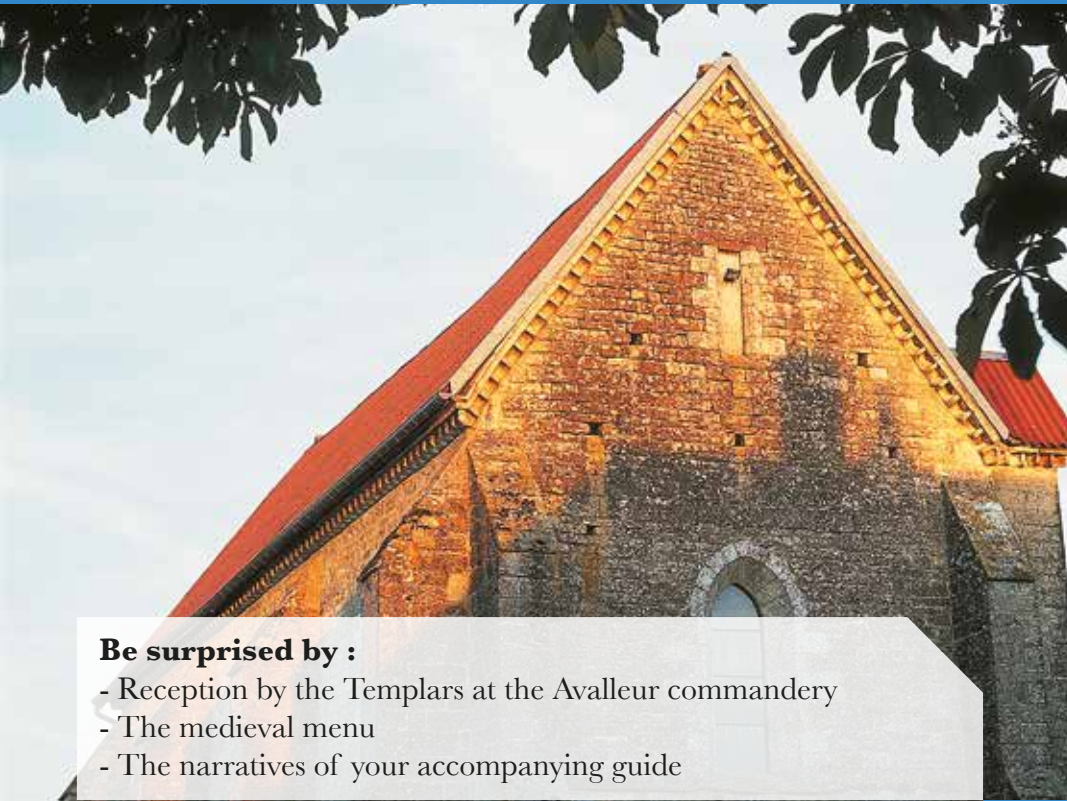
2 – Afternoon tavern (drinks and gourmet dish)



Credit photo : Auberge du Cygne et la Croix

Credit photo : JM Gouraud GDT Aube

Beginnings of the Templars



The Aube department is the birthplace of the Order of the Temple. Homeland of Hugues de Payns, founder of the Templars in 1120 in Jerusalem, Champagne, thanks to the of commitment of its Counts and the radiance of Bernard de Clairvaux, actively contributed to the growth of the first religious and military order, charged with protecting the pilgrims and defending the Crusader states in the East.

Be surprised by :

- Reception by the Templars at the Avalueur commandery
- The medieval menu
- The narratives of your accompanying guide

MORNING

You begin the day at the **Hugues de Payns Museum**, which traces the life of the founder and first master of the Order of the Temple born around 1070, and then you will be accompanied by a guide who will recount the **History of the Templars** before you enjoy a **medieval menu**.

AFTERNOON

You will be received at the **Avalueur Templar Commandery** by Templars and finish the day with a **Champagne tasting** in the heart of the **Chapel**.

EXCURSION

1 day

From € 50*

Per person – transport not included

Distance : 80 km

*price based on a group of 30 people



« A very enriching day!
We really liked
everything! »

European road circuit
of the Templars
www.templarsroute.eu

YOUR DIRECT CONTACT :
VOYAGES COLLARD
17, PLACE DES MARIYRS - BP 125 - 10104
ROMILLY-SUR-SEINE
TEL : 03 25 24 06 64
servicegroupes@groupe-collard.fr
www.groupe-collard.fr



Credit photo : Thierry Leroy

Credit photo : Jean-Marc Gourdon

Pleasure of the senses

NEW

NATURE

You can choose from many activities: 24 bicycle loops, two greenways and 51 circuits for walking tours, fishing, swimming, watersports, ornithological discoveries and lots of other surprises...

Be surprised by :

- The French gardens of the Motte-Tilly chateau
- 3000 species of plant in the botanical garden
- Delicious biscuits from the little Biscuiterie (Biscuit Factory)

MORNING

Visit to the Motte-Tilly chateau and its gardens. The current chateau, dominating the Seine, was built in 1754 from plans drawn by François Nicolas Lancret for a summer home intimately associated with a **“French-style” parkland**, listed as an “outstanding garden”, that includes copses, perspectives, and water mirrors. Since 2005, the Motte-Tilly gardens are very proud of their “Tilletum” (Lindenum), a botanical collection of Linden Trees.

Lunch of a local produce

AFTERNOON

Visit to the **Marnay-Sur-Seine botanical garden**, a “scientific” garden accessible to all, where you will discover wild plants and vegetables, spices, and other medicinal plants.

To end your day, a visit to the **little Biscuiterie** of Maizières-la-Grande-Paroisse will awaken your taste buds! The speciality, the little Maizieron, is made using traditional ingredients and methods and available in several flavours: rum, essential lemon oils, caramel, champagne brandy croquettes...



« The visit to the Biscuiterie is a delight for the eyes and taste buds! »

EXCURSION

1 day

From € 45*

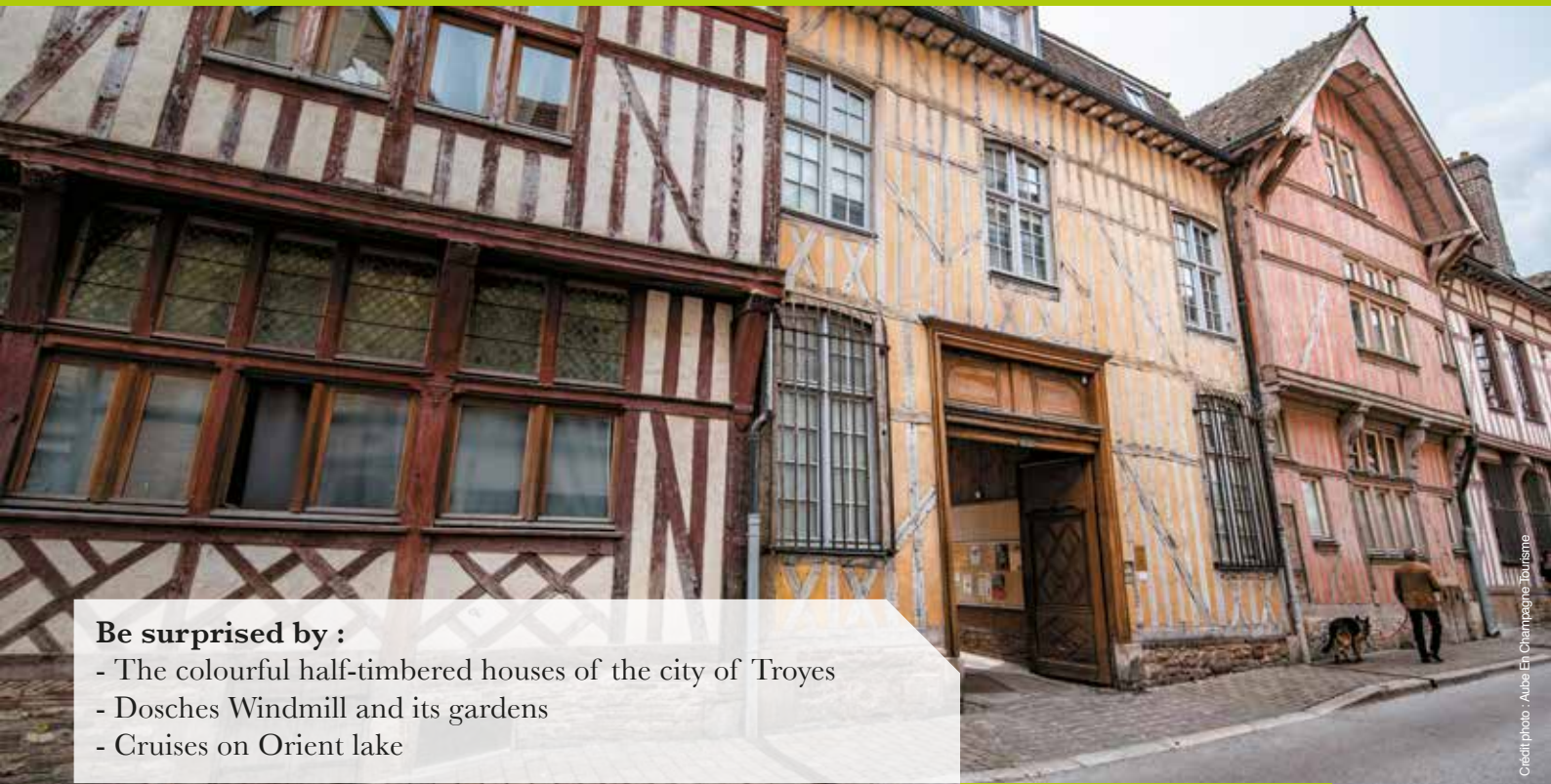
Per person – transport not included

Distance : 31.5 km

*price based on a group of 30 people



From half-timbered houses to the windmill



Be surprised by :

- The colourful half-timbered houses of the city of Troyes
- Dosches Windmill and its gardens
- Cruises on Orient lake

MORNING

The city of **Troyes**, its cathedral and its colorful timber-frame houses invite you to stroll. Enter the imposing cathedral with multicolored stained glass. **Lunch on the shores of Orient Lake.**

AFTERNOON

Discover of the regional natural park of the Orient Forest on a **cruise with commentary** before entering a post **windmill** to explore flour milling and extend your visit with a walk through the ancient gardens and the 15th century tithing barn.



Credit photo : Mme Schaefer



«How enjoyable to take advantage of the quiet and landscapes of Orient Forest! A walkers paradise.»

EXCURSION

1 day

From € 51*

Per person – transport not included

Distance : 44 km

*price based on a group of 30 people

Option to extend for a stay

1 day or 1/2 day

Cross the Orient Lake in a canoe, lunch on a peninsula (picnic option) and return by the submerged forest.



In the company of Pierre-Auguste Renoir



GREAT MENS

Aube has also known its famous men: Hugues de Payns, founder of the Order of the Templars; Saint Bernard founded Clairvaux Abbey here, Napoléon at Brienne le Château, Danton born in Arcis sur Aube not to mention the great impressionist master Pierre Auguste Renoir who lived in the village of Essoyes during some of the best years of his life.

Be surprised by :

- Essoyes, beloved village of the painter Renoir
- The garden of Renoir's workshop
- Renoir's champagnes

MORNING

The day begins with **a walk in Troyes**, in the footsteps of the famous impressionist painter, Pierre-Auguste Renoir, through the city's 19th century urban setting. «Renoir went for walks in Troyes. He loved the old houses and liked to feast his eyes on the sculptures of its churches» (Jean Renoir).

Direction the village of Essoyes which pays tribute to one of its most famous residents : the painter Renoir.

Lunch of a local produce.

AFTERNOON

From the space dedicated to the celebrated family of artists to the painter's studio where the natural light inspired many of his paintings, you will walk in the footsteps of the great master of Impressionism. Since March 2017, **the Renoir family house** opens its doors to you. From among the reconstructed and original works displayed in the case in the dining room, the world of the peasant life from the start of the XX century is revealed to you, when Renoir came to Champagne to live a peasant's lifestyle. Before leaving, you will visit a **Champagne cellar** where you will taste one of **Renoir's Champagnes!**



«Now I understand why Renoir liked the village of Essoyes so much!»

EXCURSION

1 day

From € 53*

Per person – transport not included

Distance : 56 km

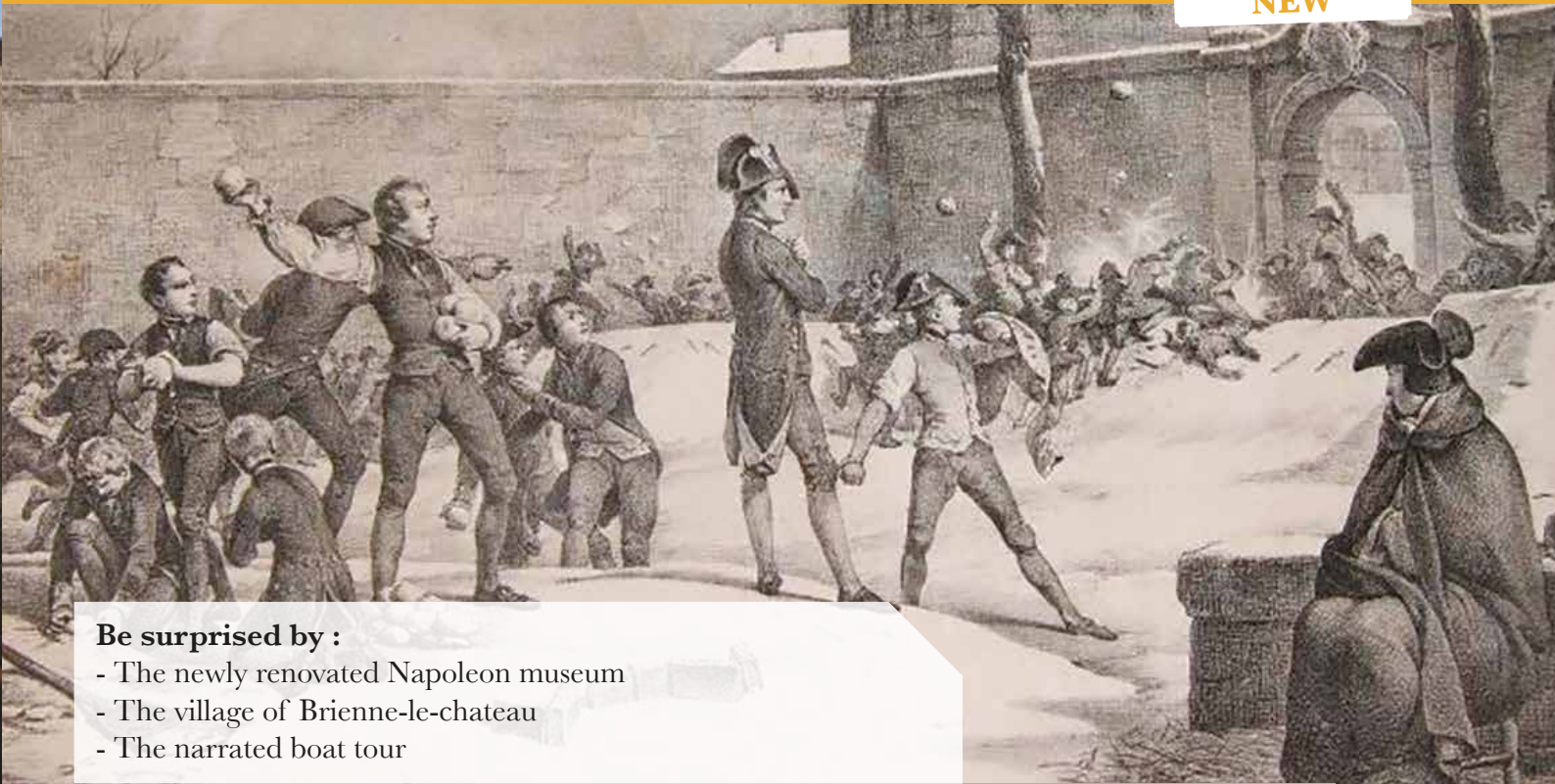
*price based on a group of 30 people



Credit photo : Jean Siracchi

In the footsteps of Napoleon

NEW



Be surprised by :

- The newly renovated Napoleon museum
- The village of Brienne-le-chateau
- The narrated boat tour

MORNING

Take advantage of a guided tour to discover **Brienne-le-chateau** and its glorious history, during which its secrets and stories will be told. Admire the sites of the former military school, listed as a Historic Monument, the Hall (MH), the chateau, before visiting the brand new Napoleon museum which takes you on a journey of the epic imperial story, the early years and the reformatory work of Napoleon.

Bonaparte. Lunch of a local produce.

AFTERNOON

Discover the **Regional Natural Park of the Forest of the Orient** while aboard a narrated boat tour telling the story of the Lake of the Orient, an artificial lake turned nature reserve, and of its fauna and flora.



EXCURSION

1 day

Valid from march to mid-september

From € 48*

Per person – transport not included

Distance : 35 km

*price based on a group of 30 people



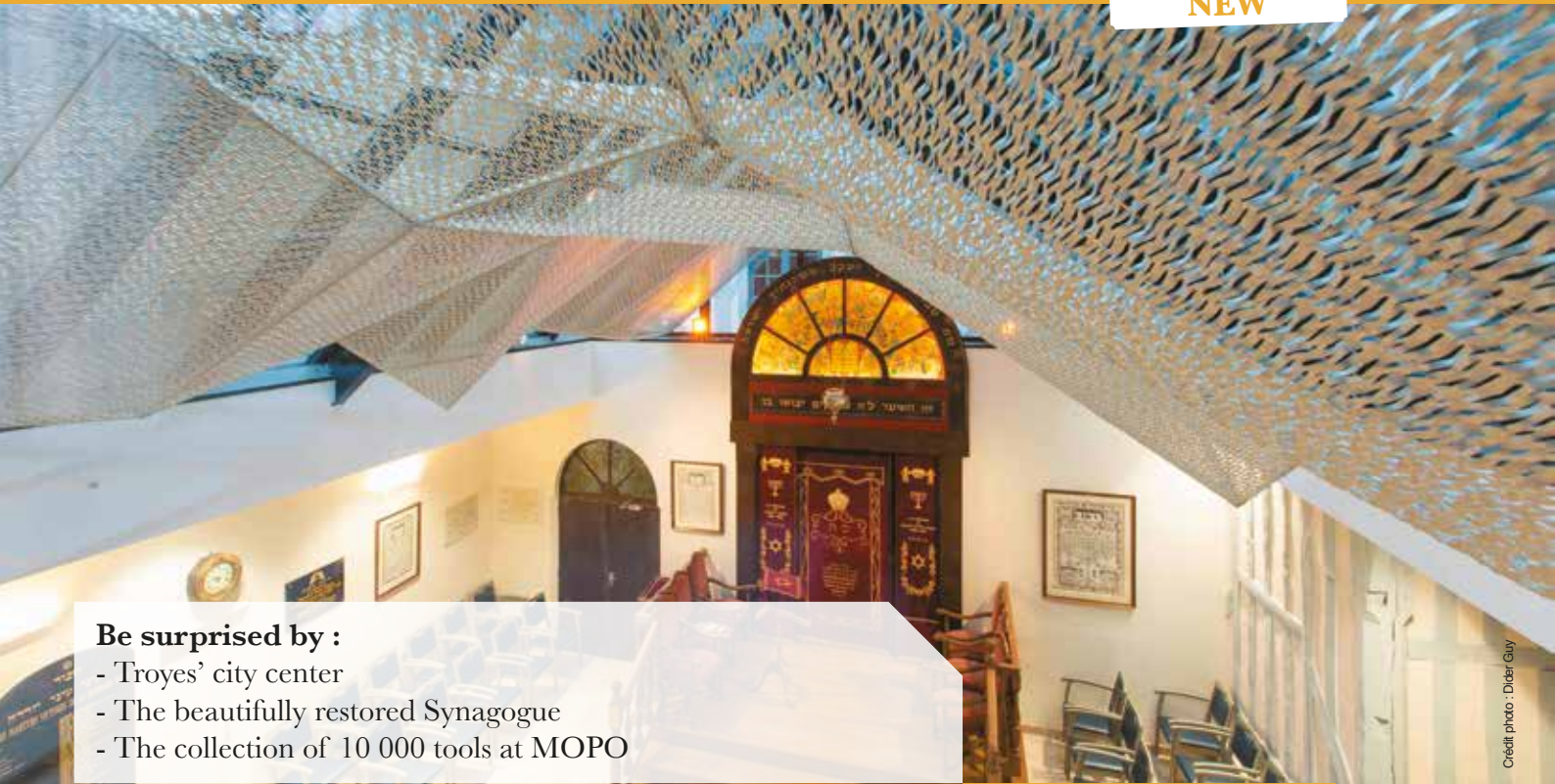
“very beautiful region to explore”



Credit photo : Torchia

Troyes, the city of Rashi

NEW



Be surprised by :

- Troyes' city center
- The beautifully restored Synagogue
- The collection of 10 000 tools at MOPO

MORNING

Rendez-vous at the Maison du Tourisme (Tourist Centre) for a visit to Troyes “**in the days of Rashi**”. A rendering of the life and works of the Great Rabbi Rashi (1040-1105). You will discover the old and new Jewish Quarter of Troyes. Lunch of a local produce.

AFTERNOON

Your guide will introduce you to the **synagogue**, restored over the course of different periods, then accompany you during a visit to a permanent exhibit featuring the world's most celebrated former inhabitant of Troyes. An extraordinary journey to the reconstructed heart of old Troyes and the critical works of Rashi.

EXCURSION

1 day

Validity : possible visits outside Friday afternoons, Saturdays and some Jewish holidays: contact us

From € 62*

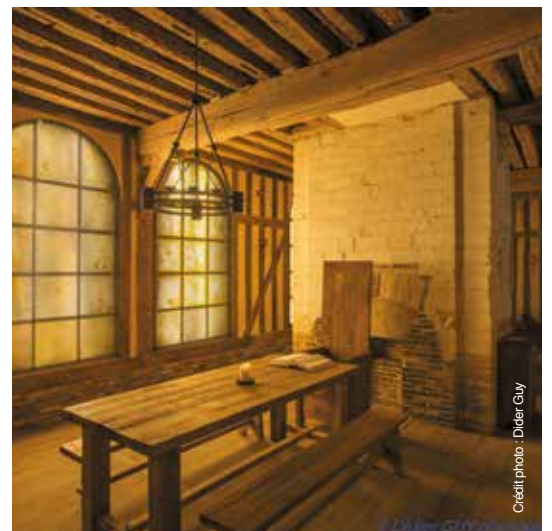
Per person – transport not included

Distance : Whole program is based in Troyes

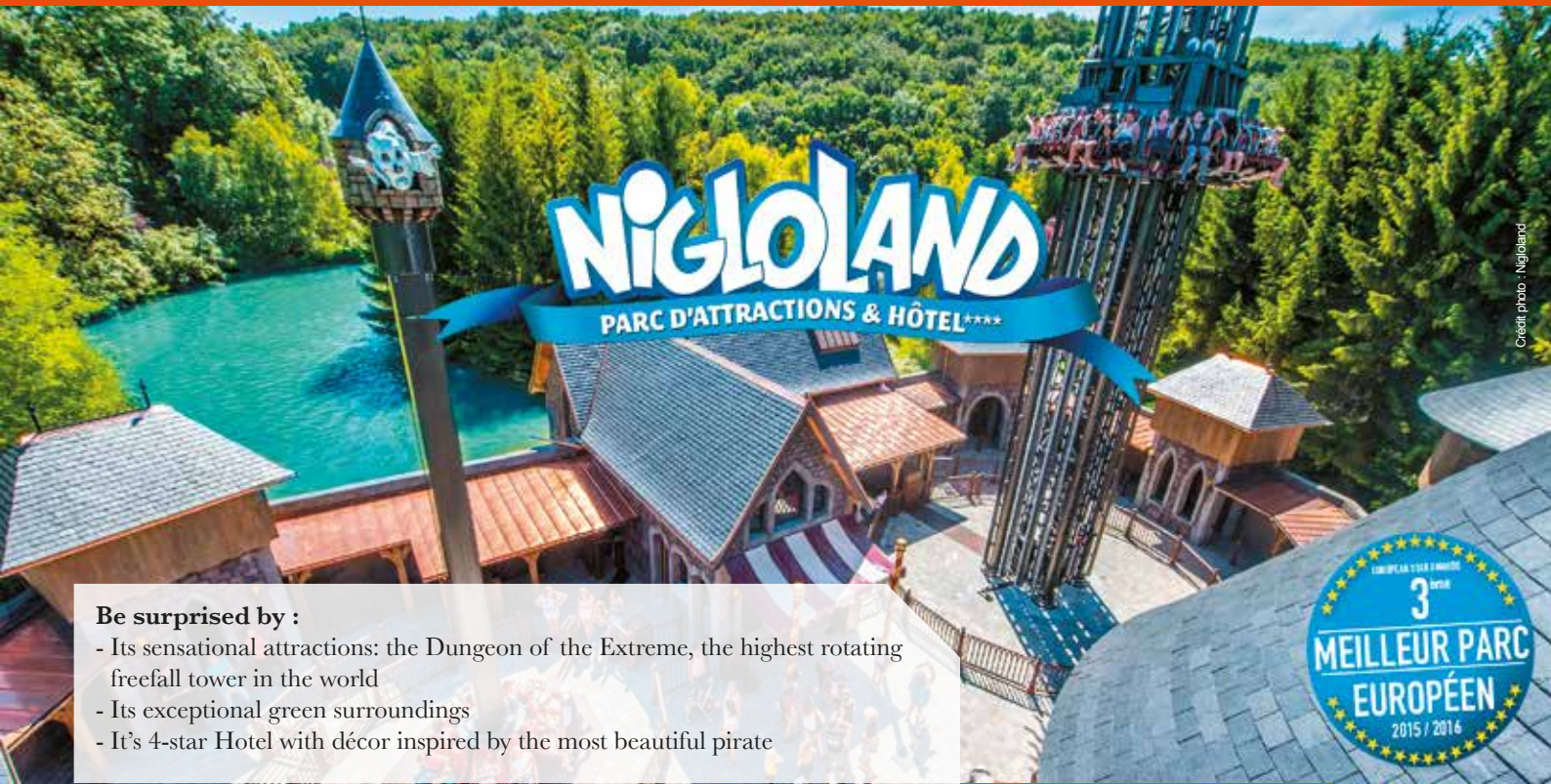
*price based on a group of 30 people



« We were able to discover what a great man Rashi was thanks to our passionate and enthralling guide. »



The magic of Nigloland



Be surprised by :

- Its sensational attractions: the Dungeon of the Extreme, the highest rotating freefall tower in the world
- Its exceptional green surroundings
- It's 4-star Hotel with décor inspired by the most beautiful pirate

DAY 1

A **champagne welcome** for an evening in a remarkable ****hotel with Pirate decor. Enjoy dining out with discreet gastronomic buffets, drinks included, and an overnight stay.

DAY 2

Day and lunch in the park. Immerse yourself into **four stunning worlds** and find **39 attractions and shows** for young and old, as well as 8 themed restaurants.



« An excellent day at Nigloland, a park where young and old of any age can enjoy themselves. You can also appreciate its proximity to the Orient Forest lakes and the Champagne vineyards. »

YOUR DIRECT CONTACT
PARC D'ATTRACTIONS NIGLOLAND
D619, 10200 DOLANCOURT
Tel. : 03 25 27 94 52
commercial@nigloland.fr
www.nigloland.fr

BREAK

2 days

Valid from april to November

Adult from € 144*
per person

**Children up to
12 years from
€ 103**
per person

Free for children under 1 meter
Distance : Whole program is
based in Nigloland

* price based on a minimum of 20 people



NEW

BE SURPRISED

*The Aube in Champagne also offers creative or unusual activities
Tours on Segway or by canoe,
participation in the harvest,
the discovery of houses and
timberframed churches, stained
glass making workshop...*

Be surprised by :

- The expertise of the Umbrella company Dess Parapluies
- The old classroom of the Forest of the Orient Ecomuseum
- Workshops filled with the history of the Royer Pottery

MORNING

You will visit the company “**Dess Parapluies & Parasols de Champagne**” which has manufactured quality umbrellas and parasols since 1978, known for experience and craftsmanship combined with modern manufacturing methods.

Lunch of a local produce

AFTERNOON

At the **Forest of the Orient Ecomuseum**, keeper of the memory of men and his traditions, you will discover rural life through its trades and habitat. The day will end with a visit to a **traditional pottery** where pots, floor tiles, bricks, and terracotta tiles are made the oldfashioned way.



*« We thoroughly enjoyed
discovering the French
knowhow »*

EXCURSION

1 day

From € 45*

Per person – transport not
included

Distance : 39,7 km

*price based on a group of 30 people



Credit photo : Dess Parapluies

Credit photo : CDT Aube

Who are we ?

These groups holidays are created and qualified by Aube en Champagne Tourism and Congress. They are sold by 8 travel agencies that have been selected for their professionalism, availability, quality of service and responsiveness. Your demand will be forwarded to those travel agencies which will propose to you their **best offer**. Each folder is subject to **monitoring quality** according to our **ISO 20121** certification for event sustainable management system.

List of tour management agencies in Aube en Champagne

Champagne



CHAMPAGNE TRAVEL

1 bis, rue Cardinal Ancher - 10000 TROYES
(N° Immatriculation : IM010100001)



TNP - TOURISME NATURE ET PATRIMOINE

5 route de Géraudot - 10220 ROUILLY SACEY
(N° Immatriculation IM010110006)



VOYAGES COLLARD

17, place des Martyrs - BP 125
10104 ROMILLY-SUR-SEINE
(N° immatriculation IM010100004)



GLOB'TOUR VOYAGES SELECTOUR

17, boulevard du 14 juillet - BP 271 - 10008 TROYES Cedex
(N° Immatriculation IM 010100007)



TOURISME & LOISIRS CHAMPAGNE

TOURISME & LOISIRS CHAMPAGNE

18 place Saint-Nizier - 10000 TROYES
(N° Immatriculation IM010100006)

Et aussi....



NIGLOLAND PARC ET HÔTEL

10200 DOLANCOURT
(N° Immatriculation IM010110001)

Martine Roussel Voyages



MARTINE ROUSSEL VOYAGES

2 rue Aristide Briand - BP 196 - 10006 TROYES CEDEX
(N° Immatriculation IM010120009)



TRANSGALLIA VOYAGES

12 rue l'Orme de la Croix - 10600 LA CHAPELLE ST LUC
(N° Immatriculation IM010110004)

Our services to make organizing your holiday easier:

- Booking of your lunches and dinners in selected establishments, 2, 3 and 4 star hotels
- Booking of a coach (personalized quotation on request)
- Private visits to prestigious sites
- Themed visits (green tourism, wine courses, cookery courses...)
- Personalized management of your file by a dedicated contact person
- Fast responses to your questions
- Put in touch with our partner travel agencies



General terms of sale

In accordance with article R.211-12 of the Code of Tourism, travel brochures and contracts offered by travel agents to their customers must include verbatim the following general terms from articles R.211-3 to R.211-11 of the Code of Tourism.

In accordance with articles L.211-7 and L.211-17 of the Code of Tourism, the provisions of articles R.211-3 to R.211-11 of the Code of Tourism, the text of which is presented below, are not applicable to operations involving the reservation or sale of tickets for transportation that are not part of a package tour.

The organizer's brochure, quote, proposal, and program constitute the prior information covered by article R.211-5 of the Code of Tourism. Consequently, in the absence of contrary provisions appearing on the other side of this document, the characteristics, particular terms and price of the journey as indicated in the brochure, quote, and proposal of the organizer, will be contractual as of the signing of the registration form.

In the absence of a brochure, quote, program or proposal, this document constitutes, before the signing by the buyer, the prior information covered by article R.211-5 of the Code of Tourism. It is null and void if there is no signing within 24 hours of its issuing.

In the event of a transfer of contract, the transferor and/or the transferee must first pay the resulting expenses. When these costs exceed the amounts displayed at the point of sale and those mentioned in the contractual documents, supporting documents will be provided.

This conditions are applied by all of tour management agencies partners of Aube en Champagne Tourism.

Excerpt from the Code of Tourism.

Article R.211-3:

With the exception of the exclusions provided for in paragraphs three and four of article L. 211-7, all offers and all sales of travel or holiday services lead to the delivering of appropriate documents that comply with the rules defined by this section.

In the event of sales of airline tickets or tickets on regularly scheduled services that are not accompanied by package-type services linked to this transportation, the seller issues the buyer one or several passenger tickets for the entire journey, issued by the carrier or under his responsibility.

In the case of transport upon request, the name and address of the carrier on whose behalf the tickets are issued must be mentioned.

The separate invoicing of the various elements of a given tourism package does not absolve the seller of his obligations under the regulatory provisions of this section.

Article R.211-3-1:

Exchanges of pre-contractual information and the providing of contractual terms are done in writing. These can be done electronically in the conditions of validity and exercising provided for in articles 1369-1 to 1369-11 of the civil code. They must mention the name or company name and address of the seller and indication of his listing in the registry provided for in article L. 141-3 or, if applicable, the name, address and indication of the registration of the federation or the union mentioned in the second paragraph of article R. 211-2.

Article R.211-4:

Prior to the signing of the contract, the seller must give the consumer information about the prices, dates and other elements that constitute the services provided for the journey or holiday such as:

- 1° The destination, means, characteristics and categories of transport used;
- 2° The type of accommodations, their location, level of comfort and main characteristics, authorization and tourism rating according to the regulations or customs of the host country;
- 3° The meal services offered;
- 4° A description of the itinerary for tours;
- 5° The administrative and health formalities to be carried out by French citizens or citizens of another member state of the European Union or of the European Economic Area, particularly in cases involving the crossing of borders, and the deadlines for carrying these out;
- 6° The visits, excursions and other services included in the package or possibly available at an additional cost;
- 7° The minimum or maximum size of the group making it possible to carry out the journey or holiday and, if the carrying out of the journey or holiday depends on a minimum number of participants, the deadline for informing the consumer in the event of cancellation of the journey or holiday; this date cannot be set at less than twenty-one days before the departure;
- 8° The amount or the percentage of the price to be paid as a deposit upon signing the contract and the schedule for the payment of the balance due;
- 9° The conditions for revision of the prices as provided for by the contract in application of article R. 211-8;
- 10° The conditions of cancellation of a contractual nature;

11° The cancellation terms defined in articles R. 211-9, R. 211-10 and R. 211-11;

12° The information concerning the optional subscription of an insurance contract covering the consequences of certain cases of cancellation or of an assistance contract covering certain particular risks, such as expenses for repatriation in the event of accident or illness;

13° When the contract includes air transport services, the information, for each section of the flight, provided for in articles R. 211-15 to R. 211-18.

Article R.211-5:

The prior information given to the consumer binds the seller, unless, in this information, the seller expressly reserves the right to modify certain parts of it. The seller must, in this case, clearly indicate to what extent this modification can take effect and on what elements.

In any event, the modifications made to the prior information must be given to the consumer before the signing of the contract.

Article R.211-6:

The contract signed between the seller and the buyer must be written, drawn up in duplicate with one original given to the buyer, and signed by both parties. When the contract is signed electronically, articles 1369-1 to 1369-11 of the civil code apply. The contract must include the following clauses:

- 1° The name and address of the seller, his guarantor and his insurer and the name and address of the organizer;
- 2° The destination or destinations of the journey and, in the case of a holiday in stages, the various periods and their dates;
- 3° The means, characteristics and categories of transport used, the starting and return dates and places;
- 4° The type of accommodations, their location, level of comfort and main characteristics and the tourism rating by virtue of the regulations or customs of the host country;
- 5° The meal services offered;
- 6° A description of the itinerary for tours;
- 7° The visits, excursions or other services included in the total price of the journey or holiday;
- 8° The total price of the services invoiced and the indication of any possible revisions of this invoicing by virtue of the provisions of article R. 211-8;
- 9° The indication, if applicable, of the fees or taxes for certain services such as landing, disembarking or embarking fees at ports and airports, visitor's taxes when they are not included in the prices of the services provided;
- 10° The schedule and method for payment of the price; the last payment made by the buyer cannot be less than 30 % of the price of the journey or holiday and must be made at the time of submission of the documents allowing him to carry out the journey or holiday;
- 11° The particular terms requested by the buyer and accepted by the seller;
- 12° The manner in which the buyer can submit to the seller a complaint for non-fulfillment or poor fulfillment of the contract. This complaint must be sent as early as possible, by any means allowing him to obtain a confirmation of receipt, to the seller, and, if necessary, indicated in writing, to the organizer of the journey and to the provider of the services involved;
- 13° The deadline for informing the buyer in the event of cancellation of the journey or holiday by the seller if the carrying out of the journey or holiday is linked to a minimum number of participants, in accordance with the provisions of 7° of article R. 211-4;
- 14° The conditions for cancellation of a contractual nature;
- 15° The conditions for cancellation provided for in articles R. 211-9, R. 211-10 and R. 211-11;
- 16° The specifications concerning the risks covered and the amount of the guarantees under the insurance contract covering the consequences of the seller's professional legal liability;
- 17° Indications concerning the insurance contract covering the consequences of certain cases of cancellation subscribed by the buyer (policy number and name of insurer) and those of the assistance contract covering certain particular risks, particularly the costs of repatriation in the event of accident or illness; in this case, the seller must give the buyer a document specifying at least the risks covered and the risks excluded;
- 18° The deadline for informing the seller in the event of a transfer of the contract by the buyer;
- 19° The commitment to give the buyer, at least ten days before his planned departure date, the following information:
 - a) The name, address and telephone number of the local representative of the seller or, failing that, the names, addresses and telephone numbers of the local organizations that could help the consumer in the event of difficulties or, failing that, the telephone number to contact the seller in the event of an emergency;
 - b) For journeys or holidays of minors abroad, a telephone number and address allowing for the establishing of direct contact with the child or the on-site manager for the holiday;

20° The clause for termination and reimbursement without penalties of the sums paid by the buyer in the event of non-observance of the information obligation provided for in 13° of article R. 211-4;

21° The commitment to give the buyer, in a timely manner before the beginning of the journey or holiday, the departure and arrival times.

Article R.211-7:

The buyer can transfer his contract to a transferee who fulfills the same conditions as him to carry out the journey or holiday, as long as this contract has not produced any effect.

Unless there is a stipulation that is more favorable to the transferee, he must inform the seller of his decision by any means allowing him to obtain a confirmation of receipt seven days before the beginning of the journey at the latest. When it is a cruise, this period is extended to fifteen days. In no event is this transfer subject to prior authorization.

Article R.211-8:

When the contract includes the express possibility of a price revision, within the limits provided for in article L. 211-12, it must mention the precise method used for the calculation of the price variations, both upward and downward, and in particular the amount of the transportation costs and related taxes, the currency or currencies that could have an impact on the price of the journey or holiday, the share of the price to which this variation can apply, and the rates of the currency or currencies used as references for the establishment of the prices appearing in the contract.

Article R.211-9:

When, before the departure of the buyer, the seller is forced to modify one of the essential elements of the contract, such as a significant price increase and when he ignores the information obligation mentioned in 13° of article R. 211-4, the buyer can, without prejudice to recourse for reparation of damage that might be suffered, and after having been informed by the seller by any means allowing him to obtain a confirmation of reception:

- either terminate his contract and obtain the immediate reimbursement of the sums paid without penalties;
- or accept the modification or substitution journey proposed by the seller; a rider to the contract specifying the modifications made is then signed by the parties; any decrease in prices is deducted from sums that may remain due from the buyer and, if the payment already made by him exceeds the price of the modified package, the surplus must be refunded to him before the date of his departure.

Article R.211-10:

In the case provided for in article L. 211-14, when, before the departure of the buyer, the seller cancels the journey or the holiday, he must inform the buyer by any means allowing him to obtain a confirmation of reception; the buyer, without prejudice to recourse for reparation of damage that might be suffered, obtains from the seller the immediate reimbursement of the sums paid without penalty; in this case, the buyer receives compensation at least equal to the penalty that he would have had to pay if the cancellation had occurred due to him as of that date.

The provisions of this article do not in any way represent an obstacle to the concluding of an amicable settlement leading to the acceptance, by the buyer, of a substitute journey or holiday offered by the seller.

Article R.211-11:

When, after the departure of the buyer, the seller is unable to provide a preponderant share of the services provided for in the contract representing a significant percentage of the price honored by the buyer, the seller must immediately take the following measures without prejudice to recourse for reparation of damage that might be suffered:

- either offer services to replace the planned services, bearing any additional cost and, if the services accepted by the buyer are of a lower quality, the seller must reimburse him for the price difference upon his return;
- or, if he cannot offer any replacement service or if these are refused by the buyer for valid reasons, provide to the buyer, at no additional cost, passenger tickets to guarantee his return in conditions that can be judged to be equivalent to the place of departure or to another place accepted by both parties.

The provisions of this article are applicable in the event of non-observance of the obligation provided for in 13° of article R. 211-4.

JOIN THE TRAVEL EXPERTS IN GROUPS!



DESTINATION GROUPES

» AUVERGNE RHÔNES-ALPES

01 AIN

Tél : 04 74 32 83 98
www.ain-tourisme.com
reservation@aintourisme.com

03 ALLIER

Tél : 04 70 46 81 63
www.groupes.allier-tourisme.com
c.burdet@allier-tourisme.net

42 LOIRE

Tél : 04 77 59 96 70
www.reservation.loiretourisme.com
agencereservation@loiretourisme.com

43 HAUTE-LOIRE

Tél : 04 71 07 41 65
www.auvergnevacances.com
groupes@auvergnevacances.com

73/74 SAVOIE MONT-BLANC

Tél : 04 50 51 61 16
www.groupes.savoye-mont-blanc.com
groupes@smbtourisme.com

» BOURGOGNE FRANCHE COMTÉ

25 DOUBS

Tél : 03 81 21 29 80
www.doubs.travel/groupes
groupes@doubs.com

89 YONNE

Tél : 03 86 72 92 10
www.tourisme-yonne.com
groupes@tourisme-yonne.com

» BRETAGNE

22 COTES D'ARMOR

Tél : 02 96 62 72 23
groupes.cotesdarmor.com
groupes.cotesdarmor@cad22.com

29 FINISTÈRE

Tél : 02 98 76 23 23
www.finistere-tourisme.com
francoise.canevet@finistere360.com

35 ILLE-ET-VILAINE

Tél : 02 99 78 50 30
www.bretagne35.com
t.guerin@bretagne35.com

» CENTRE VAL-DE-LOIRE

18 CHER

Tél : 02 48 48 00 19
www.berryprovince.com
nathalie.roger@ad21.fr

28 EURE-ET-LOIR

Tél : 02 37 84 01 02
www.tourisme28.com
infogroupes@tourisme28.com

36 INDRE

Tél : 02 54 07 36 15
www.berryprovince.com
adurand@berry.fr

37 INDRE-ET-LOIRE

Tél : 02 47 27 27 32
www.valdeloire-tourisme.fr
groupes@valdeloire-tourisme.fr

45 LOIRET

Tél : 02 38 62 97 34
www.circuitsgroupesloiret.com
groupes@reservation-loiret.com

» GRAND EST

10 AUBE

Tél : 03 25 42 50 83
www.aube-champagne.com
estelle.mazard@aube-champagne.com

52 HAUTE-MARNE

Tél : 03 25 30 31 90
www.tourisme-hautemarne.com
groupes@tourisme-hautemarne.com

» HAUTS DE FRANCE

02 AISNE

Tél : 03 23 27 76 78
www.jaimelaisne.com
reservation@aisne-tourisme.com

59 NORD

Tél : 03 20 57 52 79
03 20 57 53 11
www.tourisme-nord.fr/groupes
resagroupes@cdt-nord.fr

60 OISE

Tél : 03 64 60 60 01
www.oisetourisme.com
reservation@oisetourisme.com

62 PAS-DE-CALAIS

Tél : 03 21 10 34 40
www.groupes-pasdecalais.com
groupes@pas-de-calais.com

80 SOMME

Tél : 03 22 71 22 74
www.somme-groupes.com
groupes@somme-tourisme.com

» ILE-DE-FRANCE

77 SEINE-ET-MARNE

Tél : 01 60 39 60 45
www.visit.pariswhatelse.fr
groupes@tourisme77.fr

93 SEINE-SAINT-DENIS

Tél : 01 49 15 98 98
www.tourisme93.com
groupes@tourisme93.com

94 VAL-DE-MARNE

Tél : 01 55 09 30 73
www.tourisme-valdemarne.fr
resa@tourisme-valdemarne.com

95 VAL D'OISE

Tél : 01 30 73 39 18
www.valdoise-tourisme.com
c.elleboode@valdoise-tourisme.com

» NORMANDIE

27 EURE

Tél : 02 32 62 84 49
www.eure-tourisme.fr
groupes@eure-tourisme.fr

61 ORNE

Tél : 02 33 15 00 07
www.escaporne.fr
groupes@orne.fr

» NOUVELLE AQUITAINE

19 CORREZE

Tél : 05 55 29 58 67
www.tourismecorreze.com
pbreuil@correze.fr

24 DORDOGNE

Tél : 05 53 35 50 33
www.dordogne-perigord-tourisme.fr
groupes@tourismeperigord.com

79 DEUX-SEVRES

Tél : 05 49 77 85 92
www.tourisme-deux-sevres.com
smatrat@adt79.fr

87 HAUTE-VIENNE

Tél : 05 55 79 72 45
www.tourisme-hautevienne.com
reservation@tourisme@cdt87.com

» OCCITANIE

09 ARIEGE

Tél : 05 61 02 30 72
www.ariégepyrenees.com
groupes@ariégepyrenees.com

11 AUDE

Tél : 04 68 11 66 05
www.audetourisme.com
c.combis@audetourisme.com

30 GARD

Tél : 04 66 36 98 13
www.tourismegard.com
reservation@tourismegard.com

31 HAUTE-GARONNE

Tél : 05 61 99 70 63
www.hautegaronnetourisme.com
fducler@cdt-haute-garonne.fr

48 LOZERE

Tél : 04 66 65 74 19
www.lozere-tourisme.com
p.teissier@lozere-resa.com

65 HAUTES-PYRENEES

Tél : 05 62 56 70 01
www.tourisme-hautes-pyrenees.com
laboutique.groupe@ha-py.fr

81 TARN

Tél : 05 63 77 01 64
www.tourisme-tarnetgaronne.fr
groupes@tourisme-tarn.com

82 TARN-ET-GARONNE

Tél : 05 63 21 79 47
www.tourisme-tarnetgaronne.fr
fabienne.sinnig@tourisme82.com

» PAYS DE LA LOIRE

53 MAYENNE

Tél : 02 43 49 46 88
www.mayenne-tourisme.com
nadia.letronnier@agglolaval.fr

72 SARTHE

Tél : 02 72 88 18 75
www.tourisme-en-sarthe.com
i.guet@sarthe-developpement.com

» DOM-TOM

974 ILE DE LA REUNION

Tél : +262 (0)262 90 78 89
www.reunion.fr
conception@reunion.fr

NATIONAL NETWORK DESTINATIONS

15 avenue Carnot - 75017 PARIS

E-mail : groupes@tourisme-territoires.net



www.destination-groupes.net

The registration number, name of the insurer and guarantor of each Touristic Reservation Agency are noted in the departmental brochures.



DESTINATION GROUPES



We look forward to welcoming you to Aube en Champagne...

AUBE

en Champagne

Your direct contact :

Estelle MAZARD

Sales representative

Tél : +33(0)3 25 42 50 83

estelle.mazard@aube-champagne.com

More information

<http://groupes.champagne-breaks.com/en>



Credit photo : Aube En Champagne Tourisme
Impression : La Renaissance 03 25 70 44 70

